



# COMPASS

A NEWSLETTER OF THE QUEBEC-LABRADOR FOUNDATION | JUNE 2015  
2015 INTERNSHIPS

*This issue of Compass is dedicated to the Interns and Volunteers who have served with QLF in our home region for more than five decades, and acknowledges the outstanding work of QLF Interns and Volunteers this year. They now join QLF's Alumni Network, the Global Leadership Network.*

The QLF Family is a Network of Alumni now based in 75 countries and six regions: New England and eastern Canada; Europe; Central and Southeast Europe; Latin America and the Caribbean; the Middle East, North Africa, and the Gulf States; and Southeast Asia. Something we have known for decades and apparent at the QLF Alumni Congress (Budapest, Hungary, 2006) is that QLF's greatest asset is its Network of Alumni. At the Congress, we recognized that QLF's Network of Alumni has the resources and capacity to address questions of planetary sustainability.

Since the Congress, we have taken steps to tap the knowledge, skills, and expertise of our Alumni so that we may engage their services to address community and conservation issues worldwide. In the coming year the potential for conservation action that lies within QLF's global Network of Alumni (known to us in the office as the Global Leadership Network or GLN) will increasingly be mobilized through regional meetings; programs and partnerships; and consulting teams to address conservation challenges in communities worldwide. We are excited with this direction of programming, which has the potential to engage Alumni as catalysts in conservation action worldwide.

To commemorate QLF's growing Network of Alumni, this issue of *Compass* features Michael Meneses, 2015; Anne Hallowell Reich, 1980s; Connor Hedges, 2014; and Elle O'Casey, 2014; and current Internships in Conservation and Stewardship that offer opportunities for the next generation leaders.

I extend my gratitude to Michael Meneses for serving as Editor of this issue of *Compass*. And I wish to acknowledge QLF Staff, Consultants, and Interns who have launched GLN initiatives this year. And lastly, a special thanks to Michael Meneses and Alex DeParde who have offered invaluable contributions to the GLN during their recent Internship. With great appreciation ~

Elizabeth Alling, *Executive Vice President*, May 2015

QLF's Network of Alumni is one of the organization's greatest assets. QLF recognizes the Global Leadership Network presents the opportunity for Alumni to share knowledge—such as longitudinal studies on bird migration—and join teams of consultants to address conservation challenges on a local, regional, and global scale.



QLF Intern, Marisol Ayala from Guatemala conducting waterfowl research, Tabusintac, New Brunswick -



Dr. Kathleen Blanchard, QLF Senior Consultant, Hare Bay Islands Ecological Reserve, Northern Peninsula of Newfoundland. The Reserve was established to protect the breeding habitat of the Common Eider (*Somateria mollissima*).

QLF Fellow, Helen Hays, unfurls mist nets for the night's tern banding, Punta Rasa, Argentina. Helen is tracking Common and Roseate Terns from Long Island Sound, New York, to Argentina.



Gidon Perlman, Co-Director of the Jerusalem Bird Observatory (JBO), and Alumnus of the Middle East Program. Data gathered are shared with ornithologists throughout the Middle East along the Rift Valley/Red Sea flyway.



Ranger Phan Van Truong, with spotting scope, observing waders and shorebirds on exposed mudflats, Xuan Thuy National Park, Red River Delta, Vietnam. Flanking Phan Van Truong are staff with Viet Nature, QLF partner organization -

*QLF exists to promote global leadership development, to support the rural communities and environment of eastern Canada and New England, and to create models for stewardship of natural resources and cultural heritage that can be shared worldwide.*

#### QLF Headquarters

55 South Main Street  
Ipswich, MA 01938-2321  
378.356.0038 (Office) QLF@QLF.org

[www.QLF.org](http://www.QLF.org)

#### QLF Canada Office

606, rue Cathcart, bureau 341  
Montréal, QC H3B 1K9  
514.395.6020 (Office) QLF@QLF.org

COMPASS





## GLOBAL LEADERSHIP NETWORK: THE PEOPLE

### Michael Meneses, New Alumnus of the GLN

*By the summer of 2014, QLF Intern Alex DeParde was wrapping up his work on blueprints outlining an initiative that will likely become QLF's new programmatic centerpiece in the coming decades, known internally as the Global Leadership Network (GLN). That same summer QLF's Beth Alling received an email from Michael Meneses, a recent Brown University graduate who said that he had heard of QLF through a former colleague at the Conservation Law Foundation, Connor Hedges. Michael asked if the organization could use a hand with any of their upcoming projects. In his email Michael told Beth that he had met Conner while they were both interning at the Boston-based Conservation Law Foundation back in 2013, had found Connor's accounts of the work he had done through the organization intriguing, and had been meaning to get in touch for some time. Beth returned his message later that day. Before long Michael made the trip up to Ipswich for an interview, and by the end of the fall had taken Beth up on an offer to join the QLF team for the winter and spring of 2015 to pick the GLN project up from where Alex had left off. Upon arriving, Michael would spend dozens of hours over the course of his first two months getting intimately acquainted with the existing body of work and bringing it into its next phase of development. This May, Michael joined Abt Associates, a Global Research Firm located in Cambridge, Massachusetts. We wish Michael the very best and welcome Michael to the QLF family, the Global Leadership Network.*

During his time at QLF, Michael Meneses worked with Beth Alling on a number of initiatives, first and foremost being the Global Leadership Network, for which he has helped to develop an operations and implantation plan drawing from work put together by a number of previous and current Interns and Staff. In early March, QLF sent a convoy, including QLF's Senior Consultant, Stephen Engle, Beth, and Michael to talk the plan through with a Maine-based, digital-marketing firm. The operations and implementation plan was used as a basis for a conversation about what the Maine-based party could do to help QLF launch the GLN. After a number of in-person and phone meetings, the two parties agreed to form a partnership to implement many of the ideas outlined in that document, particularly those pertaining to the creation of an online tool that will facilitate collaboration between past,



Michael Meneses, QLF Office, Massachusetts -

present, and future Alumni. As this newsletter goes to print, the digital-marketing firm is hard at work creating that online platform, a critical first step to operationalizing QLF's new programmatic-center piece.

Since discussions with the firm in early March, Michael has also been tapped to help develop QLF's Brand Standardization

Guide, and a set of Program Evaluation Metrics for the 2015 Internships, all the while taking every opportunity to get to know the ins and outs of managing QLF.

When asked to describe his QLF experience, Michael said: *I look back on that sunny Providence summer day when I sat down to email Beth, and I am still amazed by how perfectly it all fell into place. There I was, a recent college graduate with no clear lead on what to do next, growing increasingly restless in my Providence apartment—a post-graduation holiday stretching beyond its welcomed duration. I wanted a cause, to find adventure, and to be challenged to use everything I had just learned. Looking through old files I found a note that I'd written to myself a year before: 'must apply to QLF after graduating'. I emailed Beth, and somehow everything fell into place like clockwork. In my first few weeks at headquarters I couldn't shake the sensation of having been plucked from the crowd to be given something really amazing to work for, and to be a part of.*

In May 2015 Michael joined Abt Associates, a consulting firm specializing in research, evaluation, and program implementation in the fields of social and environmental policy, and international development. From there, he plans to transition into a graduate program to study the dynamics of global trade and its impacts on environments and people. He hopes to one day establish a career working at the forefront of ongoing regional and global efforts to ensure that people, culture, and environment always come first, much like his mentors at QLF do today. ☺

PHOTOGRAPH BY ELIZABETH ALLING





## GLOBAL LEADERSHIP NETWORK: THE PEOPLE

### Anne Hallowell Reich, Alumna of the GLN

*Anne Hallowell Reich was a Staff Member with QLF's Marine Bird Conservation Project in Harrington Harbour, where she worked with Dr. Kathleen Blanchard in the early 1980s. During her time with the program, Anne led field ecology programs for local children on St. Mary's Island, helped generate a community commitment to seabird conservation, and conducted research that would become the basis for her Master's in Education at Cornell University. Since then, Anne has engaged in a life-long career as a community steward, environmental educator, writer, and mother. Anne and her husband, Peter Reich, live along the St. Croix River in Minnesota where bald eagles and trumpeter swans are their neighbors.*

*I grew up in a family of naturalists, surrounded by wild animal pets and a spirit of curiosity and adventure about the natural world. We children spent hours freely exploring the woods, fields, and pond near our New Jersey home. I developed a deep love for nature that inspired me to study field biology in college. When I was 21, I began a summer job with the National Audubon Society on Hog Island, Maine, that would change my life, introducing me to a vibrant community of people, including Kath Blanchard, who were committed to environmental stewardship, teaching, and research.*

Post-college, Anne taught elementary science at the Potomac School, McLean, Virginia, and continued summer work with Audubon. She brought seabird research into the classroom, engaging young students with a puffin behavior study that she and Kath conducted in Maine. By this time, Kath had joined QLF, and her Marine Bird Conservation Project was taking off. Anne would soon join Kath for summer work with the project.

*My time with QLF provided new perspectives on teaching and community engagement that would eventually impact my work later in life. QLF friends Kath, Larry Morris, and Tom Horn also introduced me to*



Anne Hallowell Reich -

PHOTOGRAPH BY HENRY REICH


*the possibility of pursuing graduate studies in natural resources and environmental education.*

Anne left classroom teaching to co-author and illustrate a field guide to native ferns, *Fern Finder*, and then enrolled in graduate studies at Cornell University. Anne returned to the Quebec North Shore as a QLF-affiliate to conduct research for her Masters in Education. Her research, *Environmental Education and the Illegal Harvest of Seabirds on the Quebec-Labrador Coast*, built on the work she had done with QLF. While at Cornell, Anne met her husband, Peter Reich, who is currently a University of Minnesota forestry professor studying impacts of rising CO<sup>2</sup> on terrestrial ecosystems.

Anne's time with QLF was an early milestone in what would become a long and rich career. She worked as an editor of educational publications for the Wisconsin Department of Natural Resources and as a prairie ecology educator in public schools in White Bear Lake, Minnesota,

where she organized planting of school prairie gardens and developed related science activities. Much of her focus has been on volunteer community-sustainability projects, which have included assisting with the Minnesota GreenStep Cities program in her town; serving as botanist for a historic mill land restoration project; helping initiate construction of, and coordinating tree-planting for, a natural playground at an elementary school; working with the community to raise funds to install a 10 kw wind turbine at a local high school for education and clean energy generation; helping create a community garden; coordinating community global climate and energy education programs; serving on the library board; and working on behalf of public education funding initiatives.

*While I did this kind of work through the years, there were certain lessons from my time at QLF that always remained relevant. Among these were the importance of basing projects in the community context, the need to listen, the power of polite persistence, and the imperative of engaging key players who can share ownership in a project's process and its successes. When people work together, good things happen, and not only can it be satisfying to share in the accomplishments, it can also be great fun.*

*Engagement in environmental stewardship is every bit as important in small town Minnesota as it was in small fishing communities along Quebec's beautiful North Shore. Everything is connected.* 

QLF Intern Anne Hallowell Reich holding a Black Guillemot (*Cepphus grylle*) chick, Marine Bird Conservation Program, St. Mary's Island, Quebec North Shore.



PHOTOGRAPH BY DR. KATHLEEN BLANCHARD



## GLOBAL LEADERSHIP NETWORK: THE PEOPLE

### Connor Hedges, New Alumnus of the GLN

Connor Hedges first began his work with QLF as an Intern in 2011. Most recently, Connor was on Staff as a Coordinator, Regional and International Programs. Connor is with the International Sales Teams at WisdomTree Asset Management in New York City. In tribute to his three and a half years of service to the QLF community, we have dedicated the following print space to the multiple chapters of his assignments at QLF, and we welcome Connor to the Global Leadership Network of Alumni.

**Northern Belize, summer 2011 ~** Connor's first assignment was to lead a team of Interns to map the Mayan trails along the northern quadrant of the 300-acre protected rainforest known as the Rio Bravo Conservation and Management Area, managed by the Belize non-profit, Programme for Belize. The map included illustrations, photography, and a descriptive narrative of each trail. Connor remarks, *It was immensely satisfying to bring closure to a complex project that required teamwork and resourcefulness working in an isolated community of a Belize rainforest. We learned the art of the possible.*

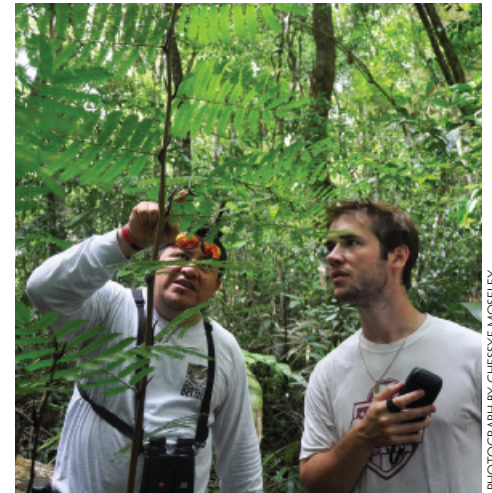
**Southern Belize, fall 2011 ~** Connor managed QLF's Ridge to Reef Eco-tour for Members of the Governing Boards (U.S. and Canada Directors) with visits to field sites and protected areas established and managed by QLF Alumni. Subsequently, in 2014 QLF participated in a land conservation effort to preserve 1,100 acres of critical rainforest in the Maya Mountain Marine Corridor managed by QLF Alumni and the Toledo Institute for Environment and Development, in Punta Gorda, southern Belize.

**Newfoundland and Labrador, 2012 ~** Connor managed QLF's Tour for the Governing Boards to visit the historic French Shore communities in northern Newfoundland including Conche where

the French Shore Historical Society was co-founded by QLF's Dr. Candace Cochrane, and traced the steps of medical missionary, Sir Wilfred Grenfell.

**Oman, 2012 ~** Connor assisted Beth Alling in managing QLF's Middle East Program Regional Meeting in Muscat, Wahiba Sands desert region, and the Ras Al Jinz Turtle Sanctuary on the Arabian Peninsula, Oman. The Meeting was attended by 40 Program Alumni and Partner Organizations from eight countries in the Middle East, North Africa, the Gulf, and North America. Connor remarks, *It was inspiring to meet the Middle East Alumni who share a passion for the environment, a respect for each other, and a commitment to address regional conservation challenges.*

**Newfoundland 2014 ~** As a QLF Staff Member, Connor worked as a mid-level Manager of Interns on The Piping Plover Conservation Project (southwest Newfoundland); the Hare Bay Biodiversity Conservation Project (Hare Bay Islands Ecological Reserve, northern Newfoundland). Connor provides his



PHOTOGRAPH BY CHESSEY MOSELEY

La Milpa Research Station, Rio Bravo Conservation and Management Area, northern Belize, June 2011. Connor Hedges with Melvis Valdez, Nature Guide, La Milpa Research Station. Connor holds a Global Positioning System device to collect data for a GIS map of Mayan trails that originate at La Milpa.

perspective as a Manager of Interns. *The benefits of QLF's Internships are two-fold. The communities benefit from the environmental education projects; and Interns benefit from being part of their community.*

...

Reflecting on the entirety of his experience with QLF, as departing Interns and Staff have often been asked to do, Connor gave us these parting comments: *At the heart of Internships is an expectation that Interns who are "Come From Aways" serve as ambassadors of the organization. My commitment was to serve in this capacity...I hold this organization in the highest regard, and it was always important to me that others do as well. On the flip side, I always felt that the organization was committed to my professional growth. My time with QLF has been transformative in my career, and I wouldn't trade my time here for anything. It has been a pleasure and an honor to serve.* ☺



PHOTOGRAPH BY NICHOLAS GATES

As part of an environmental education initiative for youth directed by Dr. Kathleen Blanchard, Connor Hedges assists in managing a bird count in Main Brook, Newfoundland, adjacent to the Hare Bay Islands Ecological Reserve.






## BIODIVERSITY CONSERVATION

**The Piping Plover Conservation Project** is one of QLF's latest marine bird conservation initiatives, operated in partnership with Intervale Associates.\* The project's goals are to help protect suitable habitat for breeding plovers in Newfoundland, and to reduce the threat of human disturbance on active plover nesting beaches. Much of this work is accomplished by enlisting Interns to monitor beach activity, collect plover productivity data, and engage local communities in conversation about ways to enjoy the beach without (unknowingly) disturbing the habitat of the endangered species. Ten beaches in the Codroy Valley of southwest Newfoundland are being monitored by Dr. Kathleen Blanchard (President and Founder of Intervale Associates), her Staff, and QLF Interns.

This summer's Interns assigned to The Piping Plover Conservation Project are Joseph Abbate, Princeton University (2018); Mégane Déziel, University of Montreal (2013); Adrean Ojoleck, Dalhousie University (2016); Elizabeth Mitchell Wallace, Stanford University (2018); and Sandrine Vigneron, Université de Montréal (2014). Their work will build on the efforts made by last summer's Interns: Scott Pynn, University of Guelph (2014); Sophie Nitoslawski, McGill (2014); Dylan Larson-Konar, Princeton (2015) as well as Alex DeParde and Charley Hildt, St. Lawrence University (2015) who worked with Dr. Kathleen Blanchard and her Intervale staff during the projects first year in monitoring the Piping Plover in

southwest Newfoundland. This year's Interns will walk the beaches with scope, camera, Geographic Positioning System, and notepad in hand to monitor Piping Plovers and collect data on nesting habitat, nest productivity, threats such as human disturbance and predation, and other activity. Data gathered will be incorporated in a report by Dr. Kathleen Blanchard, submitted to the Government of Canada, and, ultimately, used to improve future efforts to protect the Piping Plover. 

*\*Intervale Associates, Inc. is a not-for-profit organization incorporated in Newfoundland and Labrador. Intervale's program Mission is to conserve biodiversity, interpret heritage, and protect the integrity of rural livelihoods.*



PHOTOGRAPH BY DR. KATHLEEN BLANCHARD

Dylan Larson-Konar, Sophie Nitoslawski, and Scott Pynn, Codroy Valley, southwest Newfoundland. Under Dr. Blanchard's leadership, Interns worked as guardians on the beaches of southwest Newfoundland to monitor plover nests, gather data on the plover population, and work within the community to encourage stewardship of the endangered species. The recovery goal for the Piping Plover (in the province) is to maintain at least 30 nesting pair in Newfoundland.

*Intervale directs projects in fish and wildlife conservation and the recovery of species at risk, working with regional networks of communities, industry, associations, universities, and citizens. For nearly three decades with QLF, Dr. Blanchard directed the Marine Bird Conservation Program until her departure from QLF in 2002 to establish Intervale Associates.*



Piping Plover (*Charadrius melodus*) -  
PHOTOGRAPH BY CHARLEY HILDT



One of ten beaches in the Codroy Valley monitored by Staff of The Piping Plover Project -  
PHOTOGRAPH BY CHARLEY HILDT



Piping Plover nesting site, Codroy Valley, Newfoundland -  
PHOTOGRAPH BY ALEX DEPARDE



## BIODIVERSITY CONSERVATION

### Hare Bay Islands Biodiversity Conservation Project

is managed by QLF Senior Consultant, Dr. Kathleen Blanchard. The project is designed to protect seabirds and sea ducks in the Hare Bay Islands Ecological Reserve adjacent to the community of Main Brook on Newfoundland's Great Northern Peninsula. The Reserve is home to a variety of seabirds and sea ducks, including the Common Eider, Common and Arctic Tern, Caspian Tern, Ring-billed Gull, Herring Gull, Great Black-backed Gull, Razorbill, Atlantic Puffin, and Black Guillemot. In recent years QLF has focused its attention on the Common Eider.

QLF recruits teams of Interns each year to work under the direction of QLF Senior Consultant, Dr. Kathleen Blanchard. Under Dr. Blanchard's supervision, Interns and Staff have constructed nest shelters designed to protect the Eiders from predators and other disturbances, monitored the Eider habitats, and collected data relevant to Canadian conservation policy makers. The Hare Bay Biodiversity Conservation Project invests much of its resources and energy in community-based environmental education, which is critical to the success of all conservation efforts.

Last year QLF sent Charles Quinn, Dylan Larson-Konar, Matthew Myers, Scott

Pynn, and Sophie Nitoslowski to initiate the first year of the Hare Bay Biodiversity Conservation Project. Interns worked closely with local communities and wildlife managers to protect Eider populations and host educational events for local youth. By the end of their summer, Interns remarked that they had "[come] to understand the value of long-term conservation that begins at the local level and engages the community to become the stewards of their environment (Dylan Larson-Konar, summer 2014)".

This year, the Hare Bay Biodiversity Conservation Program welcomes Interns Kevin Barry and Matthew Nightingale, Brooks School (2016); Anna Maritz,



Common Eider (*Somateria mollissima*), Hare Bay Islands Ecological Reserve, Newfoundland -

PHOTOGRAPH BY LARRY MORRIS

Princeton University (2018); Jeffrey Potts, Colgate University (2017); and Mia Thomas, St. Lawrence University (2016). We hope that they find their experiences as fulfilling as did their predecessors, and we welcome them as the newest members of QLF's global family. 🌐



QLF Staff and Interns heading back to the boats after a day constructing and setting up nest shelters for Common Eiders on an island near the Hare Bay Islands Ecological Reserve, Newfoundland. July 2014 -

PHOTOGRAPH BY NICHOLAS GATES



Interns assigned to Dr. Kathleen Blanchard's Biodiversity Conservation Program. Left to right: Dylan Larson-Konar, Princeton (2015); Nick Gates, Lafayette College (2017); Charlie Quinn, Brooks School (2015); Connor Hedges, Colgate University (2011); and Matt Myers, Brooks School (2015). St. Paul's River, Quebec North Shore, July 2014 -

PHOTOGRAPH BY ELIZABETH ALLING





## MARINE CONSERVATION

### The Sounds Conservancy Marine Research Program

*celebrates 20 years of marine research, conservation, and stewardship along the Sounds and coastal waters of southern New England and New York. Over the past two years, the program has been managed by QLF Intern, Grace Weatherall. Grace is a Junior at Williams College.*

Each year, The Sounds Conservancy awards small grants to graduate students and young professionals pursuing a career in marine conservation and stewardship. Grantees are affiliated with some of the leading universities and organizations in Southern New England and New York to include: University of Connecticut, Avery Point; Yale School of Forestry and Environmental Studies; University of Rhode Island; the American Museum of Natural History; Audubon (Connecticut, Massachusetts, and Rhode Island); and Woods Hole Oceanographic Institution.

It is only fitting that at the program's 20th Anniversary, QLF launched a new electronic platform; that is, an online, interactive website for grantees, The Sounds Conservancy Grants Explorer: [tsc.qlfmaps.org](http://tsc.qlfmaps.org). Under the direction of Stephen Engle, Senior Consultant, Community Mapping and GIS Specialist, Connor Hedges, and Intern, Grace Weatherall, QLF launched the program's first interactive website, which maps two decade's worth of program grantees and corresponding work, including research narratives, affiliations, years of research, and geographies. Importantly, the site allows

grantees safe access to their online account, which they may use to store and share past research, and to network with other grantees.

Having successfully launched the platform, QLF is now using it as a model for the development of a parallel online tool for the entire QLF Alumni Network, the Global Leadership Network



QLF Interns, Ipswich, Massachusetts. Left to right: Grace Weatherall, Williams College (2016); Charley Hildt, St. Lawrence University (2015); and Connor Hedges, Colgate University (2011) -

Online. Once linked with GLN Online, The Sounds Conservancy Grants Explorer will enable New England-based marine researchers to network and collaborate with QLF Alumni outside of the U.S., in 75 countries and six world regions.

Now in its third decade, The Sounds Conservancy Program will increasingly draw on online collaboration in order to strengthen its ability to coalesce communities of stewards capable of advancing conservation in communities worldwide.

At the heart of the program though, will always be a core endeavor to connect budding stewards with coastal landscapes and communities in need, and to empower those individuals to be effective stewards of these places.

Over the course of its two decades in operation, The Sounds Conservancy has engaged hundreds of young stewards in meaningful learning and service experiences—and

they always seem to stay connected, and come back for more. Grace noted, *Working at QLF is always an excellent experience, a fact that is mostly due to QLF's unique sense of community...I could see first-hand the lasting and close connections QLF members make with both QLF Alumni and friends...I appreciate and enjoy the strong Intern tradition at QLF.*

In pursuing The Sounds Conservancy Grants Explorer and other third-decade programs, we hope to generate new opportunities for the stewardship of marine environments with meaningful outcomes. This summer, we look forward to bringing on a new cohort of program Interns from Skidmore College, to engage them in formative learning experiences and to welcome them, whole-heartedly, into QLF's extended stewardship family. ☺



The Sounds Conservancy is a marine research and education program designed to protect the estuaries, coastal waters, and Sounds of southern New England and New York. This interactive map explores the hundreds of small projects that have been funded since 1985.



## REGION-TO-REGION CONSERVATION EXCHANGE

### The Southeast Asia Conservation Exchange Program

is in its second year. The program is designed to increase forest stewardship capacity in Vietnam by leveraging the experience in building region-to-region conservation leader exchanges that QLF developed while working in its other focus regions. The 2014 Program participants were identified by Viet Nature, QLF partner organization based in Hanoi. Program participants represented the government forest departments and academia: Van Ngoc Thang, Director, Natural Conservation Division, Quang Tri Forest Protection Department; Nguyen Van Duan, Deputy, Forest Protection Department, Quang Binh Province; Nguyen Thi Thanh Huong, Ph.D. candidate in Agricultural Economy, Vietnam National University of Agriculture; and Phan Thanh Quyet, Lecturer, Quang Binh University.

The program consisted, among other things, of a Forest Stewardship Study Tour in New England, which included meetings with land trusts, conservation organizations, former QLF Board Chairman, James Levitt, with the Lincoln Institute (Massachusetts) and QLF Board Chairman, Jameson French, of Northland Forest Products (New Hampshire). Exchange fellows also participated in intensive academic coursework focused on

large landscape-scale conservation, using the Acadian Region of Downeast Maine and southwestern New Brunswick, a “living classroom and laboratory.”

This summer QLF will expand the geography of the program to include Fellows from other countries within the region. Forest stewardship will remain the program’s primary focus even as it expands. We welcome Interns from Brown University, McGill University, and St. Lawrence



University to manage the 2015 Conservation Exchange Program. With a grant from the Galilean Fund, QLF Staff were able to participate in the BirdLife International Congress in Ottawa, Ontario (June 2013). There Larry Morris met with Viet Nature representatives and discussed his interest in establishing a QLF Stewardship Exchange with Southeast Asia, specifically Vietnam. Left to right: Larry; Hoang Thanh Ha, Head of Communications; and Pham Tuan Anh, President -

University to manage the 2015 Conservation Exchange Program. 



In April 2014, funding allowed Larry Morris to accept an invitation by Viet Nature to visit Hanoi and to travel to Quang Binh and Quang Tri Provinces to explore ways to develop ties between the two regions. A partnership developed to include an exchange program with a focus on forest stewardship and technical support that would advance the programmatic mission of both organizations and express QLF’s Mission to share models of stewardship of natural resources and cultural heritage. Here, Larry Morris meets with faculty and graduate students at Quang Binh University, Dong Hoi, Vietnam. Two faculty members attended QLF’s first Southeast Asia Conservation Exchange Program.



PHOTOGRAPH BY ELIZABETH ALLING

Van Ngoc Thang, Provincial Forest Protection Department, Quang Tri, Vietnam, with Tom Wansleben of the Mount Grace Land Conservation Trust (MA). Mount Grace is a regional land trust accredited by the Land Trust Alliance.



PHOTOGRAPH BY LARRY MORRIS

Forested landscape seen from the Ho Chi Minh Highway, Western Spur, Truong Son Mountains, Quang Binh Province. Forest stewardship, watershed management, and biodiversity conservation are high on Vietnam’s environmental agenda and were themes addressed in the first Southeast Asia Conservation Exchange Program.





## STEWARDSHIP

### Elizabeth (Elle) O'Casey, QLF Alumna

Elle O'Casey joined QLF in the fall of 2013 as an Intern working with Brent Mitchell, Senior Vice President, Stewardship. She continued with QLF through 2014 on the Urban Matters Project, an initiative of the National Park Service (NPS), directed by its Stewardship Institute (Woodstock, Vermont) in partnership with QLF. Elle has a Master's in Public Policy from Oregon State University.

**U**rban Matters is a broad-based, crowd sourced initiative designed to create "communities of practice" of practitioners to address the needs, challenges, and opportunities associated with urban national parks. As more than 80% of Americans live in urban areas, conservation organizations have shifted their focus, in part, to include urban areas. During her Internship, based at the Stewardship Institute, Elle advanced the *Urban Matters* initiative, convening communities of practice to address topics relevant to urban areas some including urban innovation, Park policy, youth and nature, and to encourage peer-to-peer collaboration and sharing of ideas across broad geographies.



Elle O'Casey -

PHOTOGRAPH BY TERRY O'CASEY

After a series of meetings with the communities of practice, Elle identified converging themes that were incorporated in a draft *Urban Agenda* for the National Park Service.

In May, the Stewardship Institute launched the *Urban Agenda* and its strategy is outlined in a 2015 report, *Urban Matters: The Call to (Urban) Action*. The report is developed by the Stewardship Institute in collaboration with QLF, Center for Park Management, and the Institute at the Golden Gate ([nps.gov/urban](http://nps.gov/urban)). Quoting from the report, "Urban areas represent the clearest channel for engaging with the next generation of conservationists, preservationists, environmental leaders and stewards of the nation's cultural heritage....The NPS



PHOTOGRAPH BY ROLF DIAMANT

Marsh Billings Rockefeller National Park, Woodstock, Vermont. For twenty years, QLF has worked in collaboration with the National Park Service Stewardship Institute based at Marsh Billings Rockefeller National Park. QLF has been a founding partner in the Institute since it and the Park were established in 1992.

*Urban Agenda* recommends an unprecedented strategic alignment of parks, programs, and partnerships to leverage the full portfolio of the NPS resources within urban areas."

## CULTURE AND HERITAGE

**The Culture and Heritage Program, Québec** is managed by François Guillet with Staff from QLF's Office in Montréal. In May 2014, François authored and illustrated, *Images du Patrimoine Montréalais/Sketching Montréal's History*. His illustrations and corresponding narratives in (English and French) document the rich and diverse architecture in Montréal. *Images du Patrimoine Montréalais* is available at the

Bibliothèque et Archives nationales du Québec and the Bibliothèque et Archives Canada. With an interest in history, culture, heritage, art, and the environment, François and Staff are writing a bilingual booklet, *The Shores of Montréal: A Historical Perspective of Culture and Conservation*, soon to be published.



Publication written and illustrated by François Guillet -



PHOTOGRAPH BY ELIZABETH ALLING

From left to right – QLF Staff in the Montréal Office, Melinda Alfano, Mino Yazdanpanah, and François Guillet -



## INTERNS AND VOLUNTEERS – 2015

Joseph Abbate, Princeton University (2018)  
*Piping Plover Conservation*  
*Codroy Valley, Southwest Newfoundland*

Kailani Acosta, Brown University (2016)  
*Southeast Asia Conservation Exchange Program*  
*QLF Headquarters, Massachusetts*

Melinda Alfano, Master of Integrated Water  
Resources Management  
McGill University (2015)  
*Middle East Program, Jordan*

Lisa Andrews, Master of Integrated  
Water Resource Management  
McGill University (2015)  
*Global Leadership Network*  
*QLF Canada Office, Montréal, Québec*

Rachel Barrachina, Skidmore College (2016)  
*Global Leadership Network*  
*QLF Headquarters, Massachusetts*

Kevin Barry, Brooks School (MA) (2016)  
*Hare Bay Biodiversity Conservation*  
*Main Brook & Hare Bay Ecological Islands*  
*Reserve, Northern Newfoundland*

Philippa Becker, Vanier College (2015)  
*Global Leadership Network*  
*QLF Canada Office, Montréal, Québec*

Mégane Déziel, University of Montreal (2013)  
*Piping Plover Conservation*  
*Codroy Valley, Southwest Newfoundland*

Alex DeParde, St. Lawrence University (2015)  
*Global Leadership Network*  
*QLF Canada Office, Montréal, Québec*

Elizabeth Hopkins, Skidmore College (2015)  
*The Sounds Conservancy Marine Program*  
*QLF Headquarters, Massachusetts*

Geulim Jun, Master of Science, Renewable Resources  
McGill University (2015)  
*Southeast Asia Conservation Exchange Program*  
*QLF Canada Office, Montréal, Québec*

Adrienne Kotler, McGill University (2015)  
*Global Leadership Network*  
*QLF Canada Office, Montréal, Québec*

Katharine Litka, St. Lawrence University (2015)  
*Southeast Asia Conservation Exchange Program*  
*QLF Headquarters, Massachusetts*

Cynthia Liu, McGill University (2015)  
*Communications, Global Leadership Network*  
*QLF Canada Office, Montréal, Québec*

Anna Maritz, Princeton University (2018)  
*Hare Bay Biodiversity Conservation*  
*Main Brook & Hare Bay Ecological Islands*  
*Reserve, Northern Newfoundland*

Michael Meneses, Brown University (2014)  
*Communications, Global Leadership Network*  
*Regional and International Programs*  
*QLF Headquarters, Massachusetts*

Matthew Nightingale, Brooks School (MA) (2016)  
*Hare Bay Biodiversity Conservation*  
*Main Brook & Hare Bay Ecological Islands*  
*Reserve, Northern Newfoundland*

Adrean Ojoleck, Dalhousie University (2016)  
*Piping Plover Conservation*  
*Codroy Valley, Southwest Newfoundland*

Jeffrey Potts, Colgate University (2017)  
*Hare Bay Biodiversity Conservation*  
*Main Brook & Hare Bay Ecological Islands*  
*Reserve, Northern Newfoundland*

Mia Thomas, St. Lawrence University (2015)  
*Piping Plover Conservation*  
*Codroy Valley, Southwest Newfoundland*

Elizabeth Mitchell Wallace, Stanford University (2018)  
*Piping Plover Conservation*  
*Codroy Valley, Southwest Newfoundland*

Sandrine Vigneron, Université de Montréal (2014)  
*Piping Plover Conservation*  
*Codroy Valley, Southwest Newfoundland*

## INTERNS AND VOLUNTEERS – 2014

Melinda Alfano, Candidate, Master of Integrated  
Water Resources Management  
McGill University (2015)  
*Culture and Heritage, Québec*  
*QLF Canada Office, Montréal, Québec*

Linh Anh Cat, Ph.D., Candidate, Ecology  
and Evolutionary Biology  
University of California, Irvine (2019)  
*Outdoor Careers Project*  
*Downeast Maine*

Alex DeParde, St. Lawrence University (2015)  
*Global Leadership Network*  
*Argentina*

Katie Flynn, Candidate, Master of Divinity  
Atlantic School of Theology, Nova Scotia (2016)  
*Culture and Heritage, Canada*  
*Southern Labrador*

Nick Gates, Lafayette College (2017)  
*Communications*  
*Newfoundland and Labrador, Quebec North Shore,*  
*QLF Headquarters, Massachusetts*

Kyla Gilbert, McGill University (2014)  
*Culture and Heritage, Québec*  
*QLF Canada Office, Montréal, Québec*

Charles Hildt, St. Lawrence University (2015)  
*Global Leadership Network*  
*QLF Headquarters, Massachusetts*

Bonnie Kissinger, Tyler School of Art (PA) (2014)  
*North American Arts Exchange Project*  
*Tides Institute, Downeast Maine*

Dylan Larson-Konar, Princeton University (2015)  
*Piping Plover Conservation*  
*Codroy Valley, Southwest Newfoundland*  
*Hare Bay Biodiversity Conservation ~*  
*Main Brook & Hare Bay Ecological Islands*  
*Reserve, Northern Newfoundland*

Matthew Myers, Brooks School (MA) (2015)  
*Hare Bay Biodiversity Conservation*  
*Main Brook & Hare Bay Ecological Islands*  
*Reserve, Northern Newfoundland*

Sophie Nitoslawski, McGill University (2014)  
*Piping Plover Conservation*  
*Codroy Valley, Newfoundland*  
*Hare Bay Biodiversity Conservation ~*  
*Main Brook & Hare Bay Ecological Islands*  
*Reserve, Northern Newfoundland*

Elizabeth O'Casey, Master of Public Policy,  
Oregon State University (2014)  
*Urban Matters*  
*Stewardship Institute, Vermont*

Manon Paquet, Master of Architecture,  
Université de Montréal (2014)  
*Culture and Heritage, Québec*  
*QLF Canada Office, Montréal, Québec*

Scott Pynn, University of Guelph (2014)  
*Piping Plover Conservation*  
*Codroy Valley, Newfoundland*  
*Hare Bay Biodiversity Conservation ~*  
*Main Brook & Hare Bay Ecological Islands*  
*Reserve, Northern Newfoundland*

Charles Quinn, Brooks School (MA) (2015)  
*Hare Bay Biodiversity Conservation*  
*Main Brook, Hare Bay Ecological Islands Reserve,*  
*Northern Newfoundland*

Lucius Reibel, Commonwealth School (MA) (2014)  
*Leadership Program*  
*QLF Headquarters, Massachusetts*

Laura Taylor Singer  
Master of Environmental Management  
Duke University (1994)  
*Eastern Maine Skippers Program*  
*Penobscot East Resource Center, Downeast Maine*  
  
Eloise Schultz, College of the Atlantic (2016)  
*Outdoor Careers Project*  
*Downeast Maine*

Grace Weatherall, Williams College (2016)  
*The Sounds Conservancy Marine Program*  
*QLF Headquarters, Massachusetts*

Minoo Yazdanpanah, Master of Integrated Water  
and Resources Management  
McGill University (2012)  
*Global Leadership Network*  
*QLF Canada Office, Montréal, Québec*





## 2014 Internship Awards through Endowed and Discretionary Funds

*Program support for 2014 Interns and Volunteers has been made possible through endowed and discretionary funds established in Memory of Alumni and Friends of the organization.*

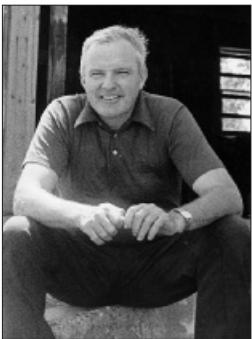


Faith Bryan -

### FAITH LAMB BRYAN FUND ~

Faith Bryan, Bob Bryan's wife, succumbed to cancer in June 2000. Faith had a long association with QLF programs and a love for the Atlantic Coast. In her memory, QLF established an endowed fund in her name that would carry on her wishes to support programs that address the needs of women and the elderly in the Northern Gulf of St. Lawrence. In 2014, The Faith Lamb Bryan Fund provided support for

**KATIE FLYNN**, Intern with the Culture and Heritage Program in southern Labrador, where Katie managed a variety of initiatives for youth and the elderly focused on cultural preservation and heritage tourism. Katie is a resident of Forteau, Labrador. She is in her second year at the Atlantic School of Theology in Halifax, Nova Scotia.



Bill Bryan -

### WILLIAM L. BRYAN FUND ~

To memorialize the work and influence on QLF of Bob Bryan's older brother, Bill Bryan, the Bryan family, and Bill's Hotchkiss School and Colby classmates established the William L. Bryan Fund to support QLF programs and services in northern New England and the Maritimes. In 2014, the fund supported the QLF Scholarship Program, and Senior Intern, **LAURA TAYLOR SINGER**, who worked in collaboration with the

Penobscot East Resource Center in Downeast Maine. Laura also served as a QLF Intern in 1992 while attending Duke University as a post-graduate.

### MARSHALL J. DODGE III ENDOWMENT ~

Bob Bryan and the QLF Board of Directors wanted to establish a suitable memorial to Marshall (Mike) Dodge whose name from the days of Bert & I will always be associated with QLF and QLF's work in New England. In 1997 QLF established the Marshall J. Dodge III Endowment, thanks to a generous grant from the Mary

Harding Trust. The income is used to support programs in community service, stewardship, and environmental education as well as scholarships awarded in Mike's name. The 2014 Marshall J. Dodge III Endowment provided support for the Scholarship Program and Intern **NICHOLAS GATES** (Nick), who returned to QLF for a second summer. A Communications Intern, Nick covered stories on regional and international programs. Nick is a Sophomore at Lafayette College.

### THOMAS C. GRAY FELLOWSHIP ~

Dartmouth graduate and QLF Council Member Tom Gray, fondly known as T. Gray to his friends, was deeply committed to the environment and to the improvement in quality of life for those living in rural areas everywhere. In 1996 Tom succumbed to a heart attack while skiing in Colorado. Tom's personal interest in the QLF Intern Program and the environmental work conducted by QLF in and around the Gulf of St. Lawrence inspired the Thomas C. Gray Fellowship. The 2014 Thomas C. Gray Fellowship was awarded to **ALEXANDER DEPARDE** (Alex) and **CHARLES HILDT** (Charley). Both began their work with QLF as Interns on the Piping Plover Conservation Project (2013) and continued with the Global Leadership Network in 2014. Alex and Charley are Seniors at St. Lawrence University.

**THE WILLIAM M. R. MAPEL FUND ~** This endowed fund is named in memory of the late Bill Mapel, QLF Honorary Director. The William M. R. Mapel Leadership Fund was established in 2014 to sponsor Internships in eastern Canada. The 2014 fund was awarded to **DYLAN LARSON-KONAR**, **MATTHEW MYERS**

(Matt), and **CHARLES QUINN** (Charlie) for their work on The Piping Plover Conservation Project and the Hare Bay Biodiversity Conservation Project in Newfoundland. Dylan is a Senior at Princeton University; Matt and Charlie are Seniors at Brooks School (MA).



Bill Mapel meets with QLF Executive Vice President Beth Alling during a reception for QLF's Governing Boards, Ipswich, Massachusetts, 2005.



Bill Moody -

#### WILLIAM S. MOODY FUND ~

Established by a grant from The Mukti Fund, the William S. Moody Fund honors Bill Moody's commitment to conservation and stewardship in the Caribbean and later in Central and Southeast Europe through his post as a Program Officer at the Rockefeller Brothers Fund. The William S. Moody Fund was awarded to **ELLE O'CASEY**

for her work on the Urban Matters project, which was developed with Brent Mitchell, Senior Vice President, Stewardship at QLF, the Stewardship Institute, and the National Park Service. Elle has her Master of Public Policy, Oregon State University.



Josh Nove -

#### JOSH NOVE FUND ~

The Fund was established by the family and friends of Josh Nove to support Conservation Internships. Josh was a QLF Intern for the Marine Bird Conservation Project on the Quebec North Shore in 1991 and 1993-1996. Josh died in 1997 (at 23 years of age) in an accident in Alaska, while engaged in bird studies with another conservation organization. The 2014 Josh Nove

Fund for Conservation Internships was awarded to **SOPHIE NITOSLAWSKI** for her work on the Biodiversity Conservation Program. A graduate of McGill, Sophie is pursuing graduate studies in Biodiversity Conservation at Dalhousie University.

#### DONAL C. O'BRIEN CONSERVATION FUND ~



Don O'Brien -

Donal C. O'Brien (Don) served as Chairman of the U.S. Board from 1971 to 1989. An Honorary Director since 1989, Don maintained his close relationship with his lifelong friend, Bob Bryan, and remained active with QLF, especially in wildlife conservation. After his death in September 2013, QLF and the O'Brien family established a revolving fund in Don's name that provides financial support to QLF Interns in the

field of Biodiversity Conservation. The 2014 Donal C. O'Brien

Conservation Fund was awarded to **SCOTT PYNN**, graduate of the University of Guelph, for his work on Biodiversity Conservation and Wolffish recovery in Newfoundland and Labrador respectively.

#### THE SOUNDS CONSERVANCY ENDOWED FUNDS ~



Chris Percy -

Christopher Percy, a lifelong conservationist known for his love of rivers and wild Atlantic salmon, founded The Sounds Conservancy Program in 1984 to protect the Sounds and coastal waters of southern New England and New York. Upon Chris's retirement in 1995, QLF assumed the Conservancy's assets and its program. The program is funded by foundation support and its named endowed funds – The Charles W. Kitchings Fund, the Norcross Wildlife Fund, The Sounds Conservancy Fund, and The Sounds Conservancy Dedicated Operating Fund. These funds provided support to **GRACE WEATHERALL**, a Junior at Williams College, who returned to QLF in 2014 for her second Internship with The Sounds Conservancy.

#### CLIVE WISHART AWARD ~

This award is given to QLF Interns who exemplify the pursuits and qualities that Clive Wishart believed in: community service and a love of young people. The 2014 Clive Wishart Award was awarded to **KYLA GILBERT**. Kyla worked on the Culture and Heritage Program out of the Montreal Office. Kyla is a graduate of McGill University.

#### INTERNSHIP ENDOWMENT FUNDS ~

In the 1990's the Hearst Foundation and the George I. Alden Trust established funds to support QLF Interns working in New England and in eastern Canada. Intern endowments like these provide the means for dozens of U.S. and Canadian students to gain valuable experience in their chosen fields of study. The 2014 William Randolph Hearst Foundation Endowment Fund and the George I. Alden Trust provided support for **LINH ANH CAT** and **ELOISE SCHULTZ**, Outdoor Careers Project, Downeast Maine. Linh Anh is a Ph.D. Candidate, Ecology and Evolutionary Biology at the University of California, Irvine. Eloise is a graduate of the College of the Atlantic.